

### QUEEN ANNE WALNUT & FEATHER BANDED COMPACT BUREAU - REF 2116

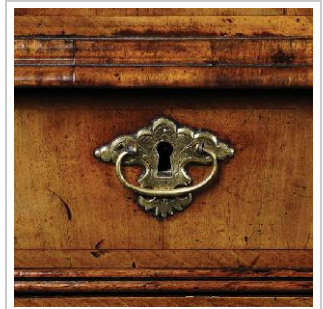


A superb Queen Anne walnut & feather banded compact bureau of excellent original colour and patina.

The top, fall and drawer fronts all inlaid with walnut feather banding, the fall fitted with an engraved brass lock escutcheon opening to reveal a fitted interior with an arrangement of drawers and pigeon holes with a central well covered with a retractable slide. The fall is supported when open, by a pair of retractable lopers.

Below a cross grain waist moulding above two short and two long oak lined drawers, apparently fitted with the original engraved back plate handles. The bureau is supported on bun feet. An extremely compact piece being only 31½" wide and of exquisite proportions.

PRICE: £12,900



**Provenance:** The collection of the Michael Krarup, Charnwood Forest, Leicestershire.

**Origin & Age:** English, Queen Anne circa 1705

**Dimensions:** 31½" wide, 19½" deep, 36½" high.  
80cm wide, 50cm deep; 93cm high.

**Restorations:** Minor old restorations, waxing. Brass ware believed to be original.

**To proceed further:** Please call on the numbers below or send an e-mail to [info@millingtonadams.com](mailto:info@millingtonadams.com). Please mention the stock reference number above. Payment can be made by bank transfer, cheque, MasterCard or VISA. We will also deliver to UK address in the price quoted above. Our full current selection of stock is available on our website [millingtonadams.com](http://millingtonadams.com).

MOBILE: 07957 382381 OFFICE: 01565 745012