

GEORGE III MAHOGANY SERPENTINE DRESSING COMMODE - REF 2113

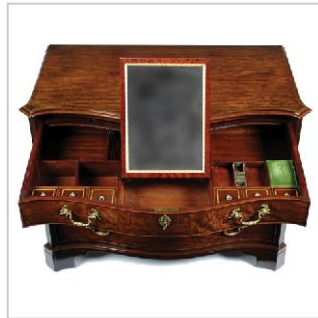


A fine George III mahogany serpentine dressing commode of very well figured plum pudding veneers, with excellent colour and patina. The serpentine top with out-swept front corners and moulded edge, over an arrangement of four graduated oak lined, cock beaded drawers. Each front corner is canted and with inset moulded stop fluting.

The drawers are fitted with Chippendale rococo style gilt brass, cast swan handles and lock escutcheons. The top drawer is fully fitted. When opened initially revealing a baize lined brushing slide and when the slide is retracted, an arrangement of open and lidded compartments and a central reversible jewellery pad and mirror rising on a retractable ratchet support.

The commode has a lower bottom moulding, and stands on four shaped canted bracket feet. A particularly good piece, with subtle use of beautifully figured veneers throughout.

PRICE: £26,900



Provenance: Private residence, Boston, Massachusetts.

Origin & Age: English, George III, circa 1760

Dimensions: 41½" wide, 22½" deep, 32" high.
105cm wide, 57cm deep; 81cm high.

Restorations: Minor old restorations, waxing. Brassware and feet believed to be original.

To proceed further: Please call on the numbers below or send an e-mail to info@millingtonadams.com. Please mention the stock reference number above. Payment can be made by bank transfer, cheque, MasterCard or VISA. We will also deliver to UK address in the price quoted above. Our full current selection of stock is available on our website millingtonadams.com.

MOBILE: 07957 382381 OFFICE: 01565 745012