

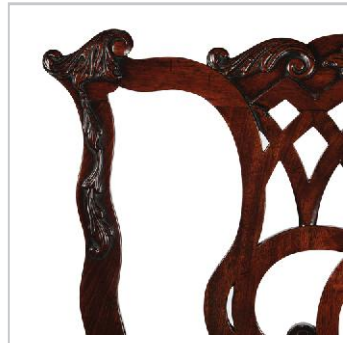
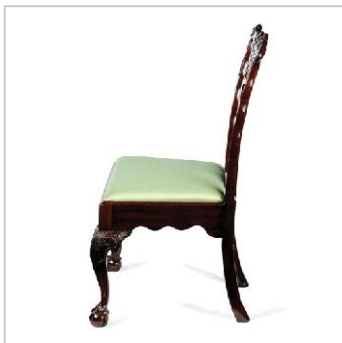
A PAIR OF IRISH CHIPPENDALE PERIOD, MAHOGANY SIDE CHAIRS - REF 2075



A fine pair of Irish Chippendale period, mahogany side chairs, of fine colour and with extensive crisply carved detailing throughout.

The scroll shaped top rail with central carved flower and further trailing leaf decoration to either side. The carved moulded wave scroll side rails with further trailing leaf decoration. The centre splat with an intricate lattice and scroll work design, with carved detailing and a carved ribbon and flower border to the bottom edge.

The drop in, tapering rectangular seat cushions, are covered with a later, green, lightly ribbed fabric. Below the seat frieze with a wave shaped edge. The chair is supported by front cabriole legs with finely detailed acanthus carved knees and a ball and claw foot. The back legs are of rounded square section and curve gently down to the floor.



A particularly fine pair, exuding constructional excellence and quality throughout.

PRICE: £14,900

Provenance: Private collection Manhattan, New York.

Origin & Age: Irish, George III, circa 1760

Dimensions: 24" wide, 38" high, 18" deep, 61cm wide, 96cm high, 46cm deep.

Restorations: Minor restorations, waxing. The covering to the drop in seats is a recent replacement.

To proceed further: Please call on the numbers below or send an e-mail to info@millingtonadams.com. Please mention the stock reference number above. Payment can be made by bank transfer, cheque, MasterCard or VISA. We will also deliver to UK address in the price quoted above. Our full current selection of stock is available on our website millingtonadams.com.

MOBILE: 07957 382381 OFFICE: 01565 745012