



MILLINGTON ADAMS

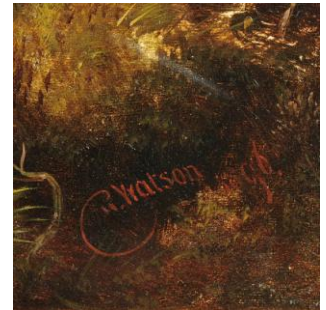
Fine antique furniture, clocks & art



Robert Watson – “*Sheep on a Highland Hillside*” - ref 2053

An atmospheric, well detailed and finely executed study of sheep on a Highland Hillside catching the soft tones of sunlight through the rolling misty clouds, painted by Robert Watson, a well regarded painter of highland animal and landscape scenes.

Born in 1865 and lived in Southport, Lancashire and one of a family of highland scene painters. Watson exhibited in Glasgow and Liverpool, despite the high quality of his work he never made the journey down to London to exhibit there. His work was always of excellent quality with superb detail and a delicate and sensitive palette.



Provenance: From a private collection in Nottinghamshire.

Price: £8,900

Artist & Painting: **Robert Watson;** British; 1865-1916; dated 1896. Oil on canvas, and has a new English made swept giltwood & gesso frame.

Dimensions of Canvas: 36” wide x 24” high; *91cm wide x 61cm high.*

Restorations: The picture has been lightly cleaned and relined for stability.

Payment: Personal cheque drawn on a UK bank in £STG, bank transfer, personal **Debit Cards, Visa, MasterCard or American Express.** Delivery to many parts of the UK included in price above.

To proceed further: Please contact us by one of the following means:

- By telephone: **01565 745012** or mobile **07957 382381**
- By e-mail: **sales@millingtonadams.com.** Please mention item reference: **2053.**

We do not have retail premises; however we welcome customers to view by appointment.