



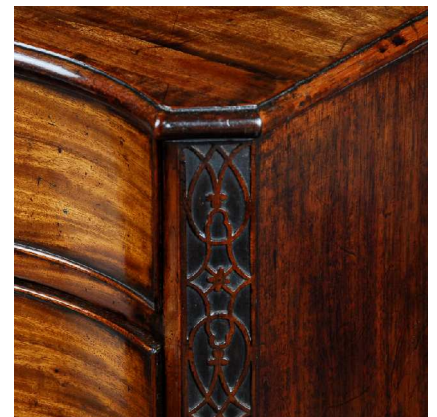
MILLINGTON ADAMS

Fine antique furniture, clocks & art

LAPADA
THE ASSOCIATION OF
ART & ANTIQUES DEALERS

George III figured mahogany serpentine commode - ref 1726

A superb early George III figured mahogany serpentine commode of compact dimensions and of excellent original colour and patina. The top with applied moulded edge and elegant serpentine shape. Below four long graduated, cock-beaded, oak lined drawers fitted with the original rococo gilt-brass swan neck handles, flanked by canted blind fret corners, the sides again in figured mahogany. The base with moulding edge over canted bracket feet. A wonderfully neat, compact piece of superb colour, patina and quality throughout.



Provenance: From a private residence in London

Price: £15,900

Origin & Age: English, George III, circa 1770

Dimensions: 35½" wide, 32" high, 21½" deep, 90cm wide, 81cm high, 55cm deep

Restorations: Minor restorations, cleaning & waxing. Handles believed to be original.

Payment: Personal cheque drawn on a UK bank in £STG, bank transfer, personal **Switch, Debit Cards, Visa, Mastercard or American Express**. Delivery to many parts of the UK is included in the price above.

To proceed further: Please contact us by one of the following means:

- By telephone: **01565 889292** or mobile **07957 382381**
- By e-mail: **sales@millingtonadams.com**. Please mention item reference: **1726**.

We do not have retail premises, however we welcome customers to view by appointment.

MILLINGTON ADAMS, KNUTSFORD, CHESHIRE

WWW.MILLINGTONADAMS.COM TEL: 01565 889292 MOB: 07957 382381