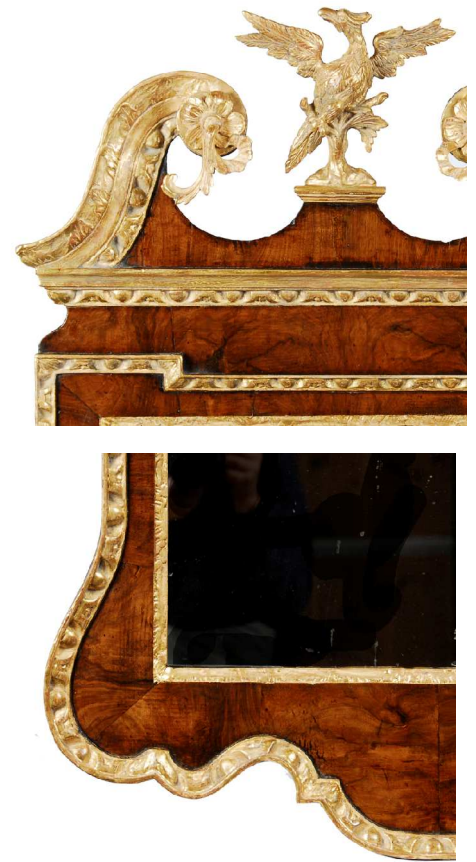


## George II walnut & parcel gilt looking glass - ref 1725

A fine English George II walnut & parcel gilt wall mirror of excellent original colour & patina. The rectangular mercury silvered plate bordered by carved gilt wood outline, with figured walnut body again bordered by a carved gilt wood moulding, to the top in a shaped rectangular pattern and to the bottom shaped and scalloped. The outer side extremis of the mirror is finished with a carved & gilded form of an expanded egg & dart pattern. To the top a central carved and gilded Ho-Ho bird standing on a central pediment bordered by swan neck pediments of intricately carved leaves and vines, terminating in a central flower rosette with trailing vines. A lovely mirror of excellent size with delightfully figured walnut throughout.



**Provenance:** From a private collector in the South West

**Price:** £10,950

**Origin & Age:** English, George II, circa 1730

**Dimensions:** 54" high, 27½" wide, 137cm high, 70cm wide.

**Restorations:** Minor repairs to small parts of lost carving, re-gilding of the same.

**Payment:** Personal cheque drawn on a UK bank in £STG, bank transfer, **Switch, Debit Cards, Visa, Mastercard or American Express**. Delivery to many parts of the UK is included in the price above.

**To proceed further:** Please contact us by one of the following means:

- By telephone: **01565 745012** or mobile **07957 382381**
- By e-mail: **sales@millingtonadams.com**. Please mention item reference: **1725**.

We do not have retail premises; however we welcome customers to view by appointment.