

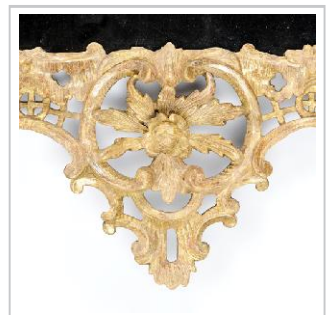
GEORGE II CHIPPENDALE PERIOD CARVED GILTWOOD MIRROR - REF 2083



An important large George II Chippendale period carved giltwood mirror, with carving of excellent quality and intricate detail throughout. The frame of pierced cartouche form, a central crest of finely carved scrolls, leaves and flowers. The shoulders with a lattice work base, surmounted by a leaf scroll. Each side with an intricately entwined, carved flower and leaf trellis work. The hips with again lattice work surmounted by further floral scrolls. The lower crest with a central flower with emanating leaf scrolls bordered by scrolling foliage flowers and floral trelliswork. The frame surrounds a mercury silvered mirror plate.

A truly fantastic piece in excellent condition, it would form a magnificent centrepiece in an important room.

PRICE: £39,000



Provenance: Private collection New York.

Origin & Age: English, George II, circa 1755

Dimensions of Image: 37" wide, 71" high; 94cm wide, 180cm high.

Restorations: The frame has had minor restorations replacing various small breakages, the gilding re-freshed. The mirror associated yet believed to be 18th century mercury plate.

To proceed further: Please call on the numbers below or send an e-mail to info@millingtonadams.com. Please mention the stock reference number above. Payment can be made by bank transfer, cheque, MasterCard or VISA. We will also deliver to UK address in the price quoted above. Our full current selection of stock is available on our website millingtonadams.com.

MOBILE: 07957 382381 OFFICE: 01565 745012